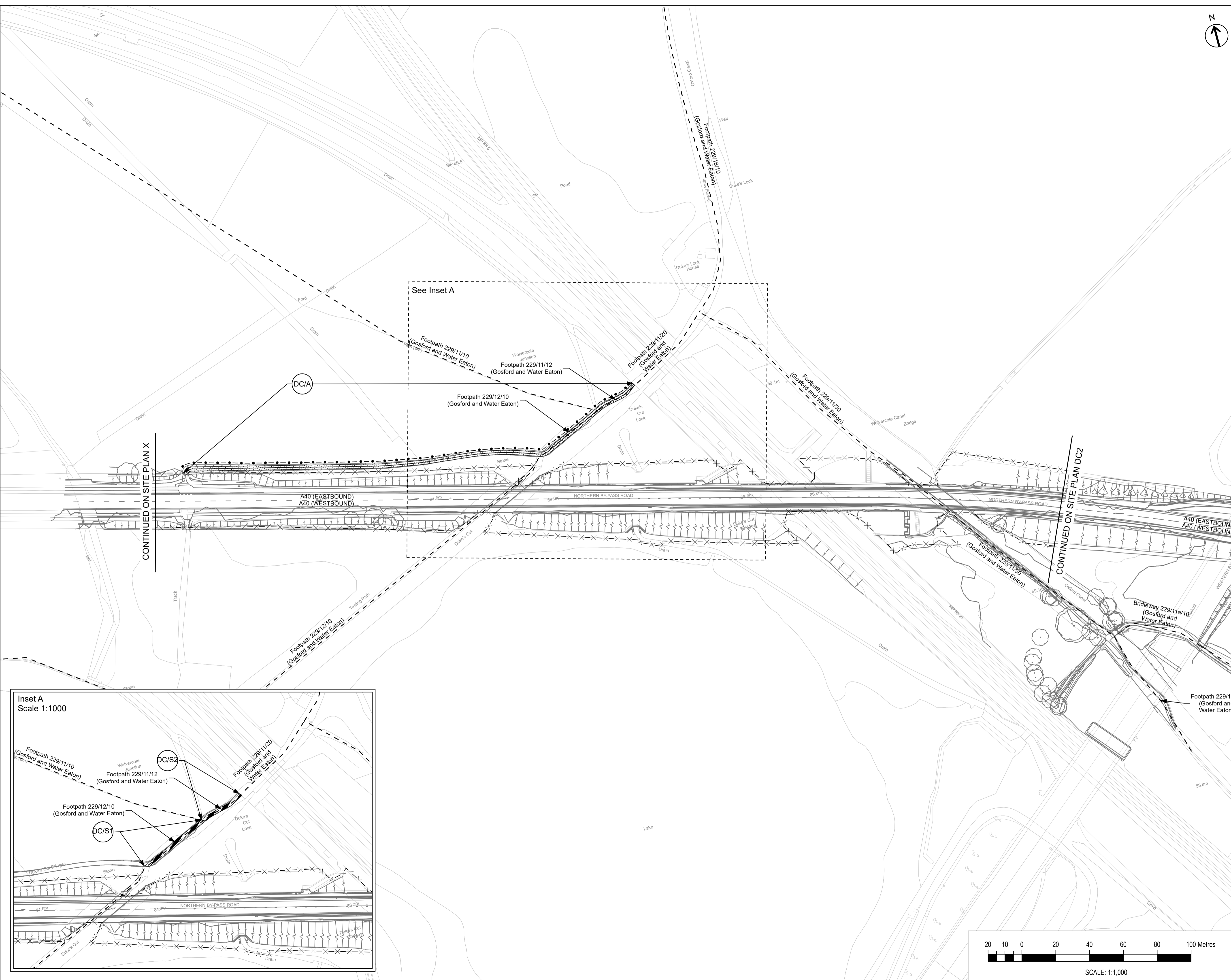
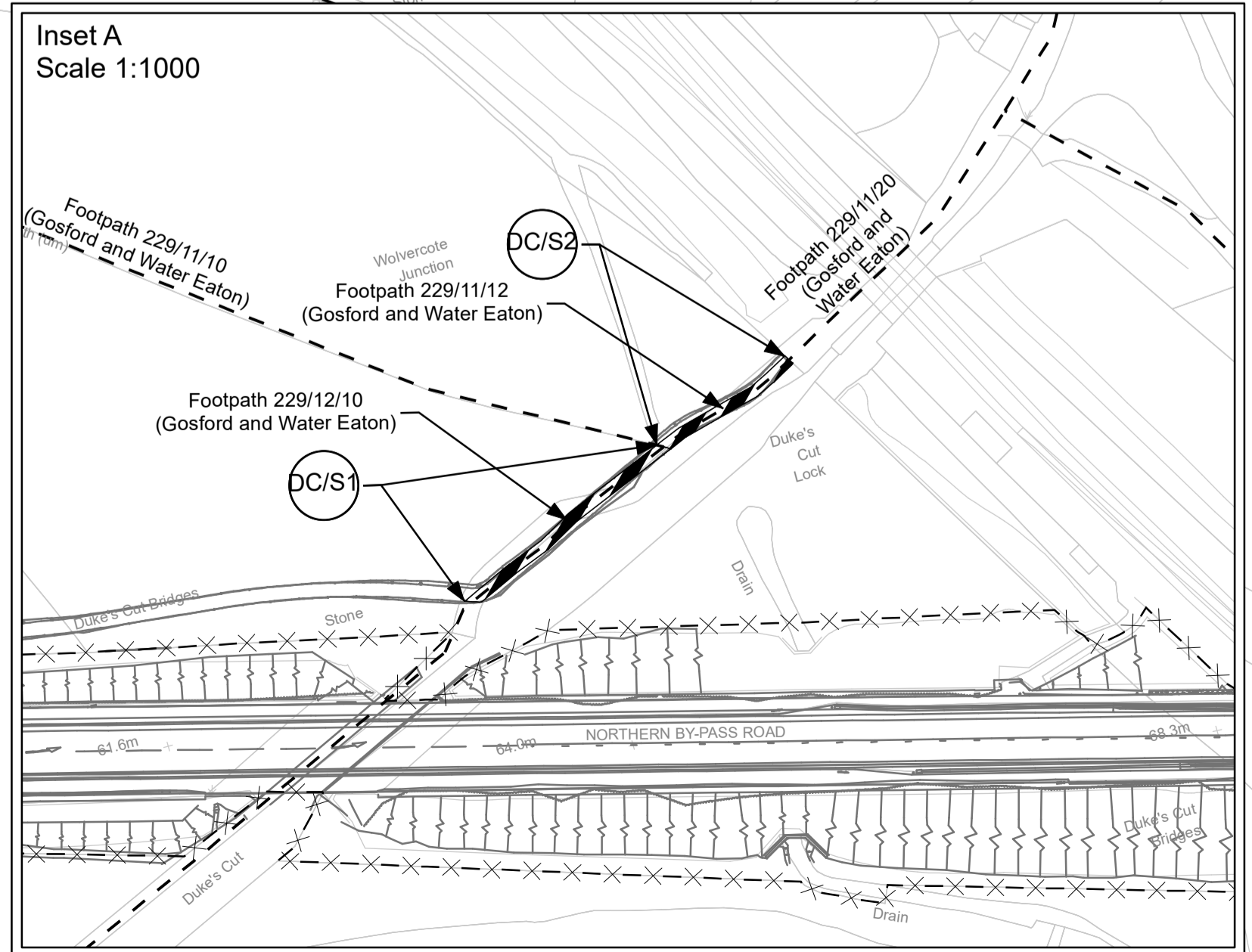


- NOTES:**
This Site Plan does not show widths or constructional details
- Borough/Parish Boundary
 - Public Right of Way
- KEY:**
- Highway Boundary
 - Classified Roads
 - Highway to be stopped up
 - Highway to be improved
 - New Highway
 - Private Means of Access to be stopped up
 - New Means of Access



CONTINUED ON SITE PLAN X

CONTINUED ON SITE PLAN DC2



P01	First Issue	07/01/22	CG	**
Rev	Description	Date	By	Approved
			Check	

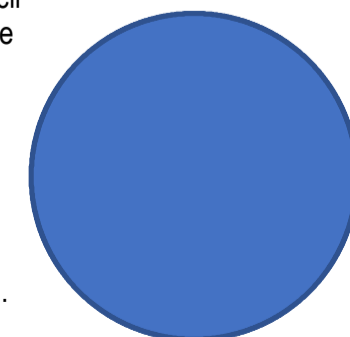
This map is reproduced from Ordnance Survey material with the permission of Ordnance Survey on behalf of the Controller of Her Majesty's Stationery Office. © Crown Copyright. Unauthorised reproduction infringes Crown Copyright and may lead to prosecution or civil proceedings. Oxfordshire County Council, 0100023443, 2021



THE OXFORDSHIRE COUNTY COUNCIL
(HIGHWAYS INFRASTRUCTURE – A40
HIF2 SMART CORRIDOR –
(HILL FARM TO DUKES CUT))
(SIDE ROADS) ORDER 2022

SITE PLAN DC1 -
A40 DUKES CUT – RAILWAY CROSSING AND
OXFORD CANAL CROSSING TO EAST OF
UNDERPASS CROSSING OF A34 WESTERN
BYPASS, AND NEW CYCLE TRACK LINK

The COMMON SEAL of
Oxfordshire County Council
was hereto affixed in the
presence of –



Authorised Officer
Dated this day of 2022 Seal No.

Drawn	Checked	Approved	Date
CG	**	**	07/01/22

GH Project Number	Scale at A1
132861.005	1:1,000
Drawing Number	Revision
GH-132861005-SRO-DC1	P01

